



## System door elements with wood, glass or framed door leaves

**Dimensions:** Standard door element size: W x H = 1,000 x 2,118 mm (frame dimension 994 x 2.115 mm), frame depth 105 mm, clear width of door passage for single-rebate frames W x H = 894 x 2,065 mm, clear width of door passage for double-rebate frames W x H = 864 x 2,050 mm, optional element width and height is building-specific, e.g. ceiling-height and adapted to DIN 18040 Barrier-free Construction.

### Wooden door element H40

**Door frame:** Aluminium frame 35/50T70; alum. frame 35/35 or steel frame 35/50 - see door frame description on page 32

**Door leaf:** Wooden flush door leaf according to DIN 68 706, door leaf thickness 40 mm, solid wood concealed edges all around, 3 mm hardboard cover on both sides, tubular chipboard, full chipboard or sound insulation insert (SSK 0/1/2), flush closing, hinge side flush with the door frame

**Surface:** Both sides covered with 0.8 mm HPL laminate according to DIN EN 438, optional real wood veneer, door leaf edges transparently coated

**Door fittings:** For wooden-door elements, see page 32

**Sound insulation:** (also see pages 38-39)  
Sound-insulation test values H40  $R_{w,p} = 23/32/37$  dB

**Fire protection:** (also see pages 44-45)  
optional T30 or T30-smoke safe, tested in solid wall EI30 and EI90, to W x H = 1,200 x 2,580 mm (with steel frame)

### Wooden door element H70

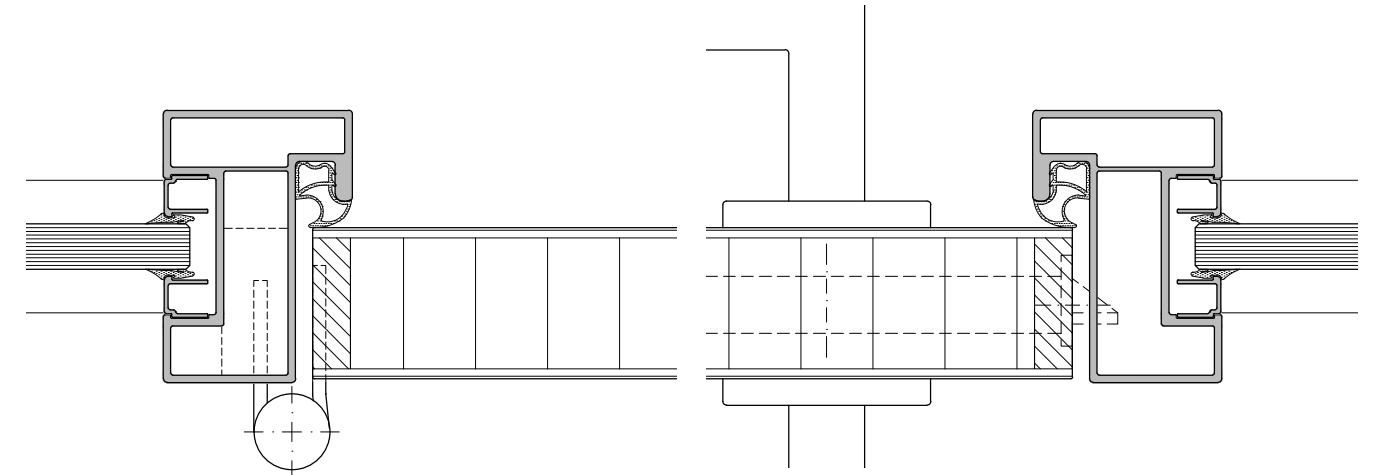
**Door frame:** Alum. frame 35/50T70, alum. frame 35/35, steel frame 35/50, alum. frame 18/50, alum. frame 18/0 with corridor-side concealed door-frame recess, double-rebate alum. frame 35/50/15 or double-rebate steel frame 35/65 - see door frame description on page 32

**Door leaf:** Aluminium framed wooden door leaf, door leaf thickness 70 mm, covered with 2 x 19 mm wooden panels, door-leaf frame consists of aluminum profiles, system groove on the face side for flush-mounting all fittings, sound insulation insert, flush closing with jamb rebate, depending on door frame on hinge side, opposite to hinge side (corridor-side) or on both sides flush to door frame/covering/glazing

**Surface:** On both sides melamine resin direct-coating according to DIN EN 14 322, optional HPL laminate to DIN EN 438 or real wood veneers, frame in aluminium anodized E6/EV1, optionally powder-coated in popular RAL colours

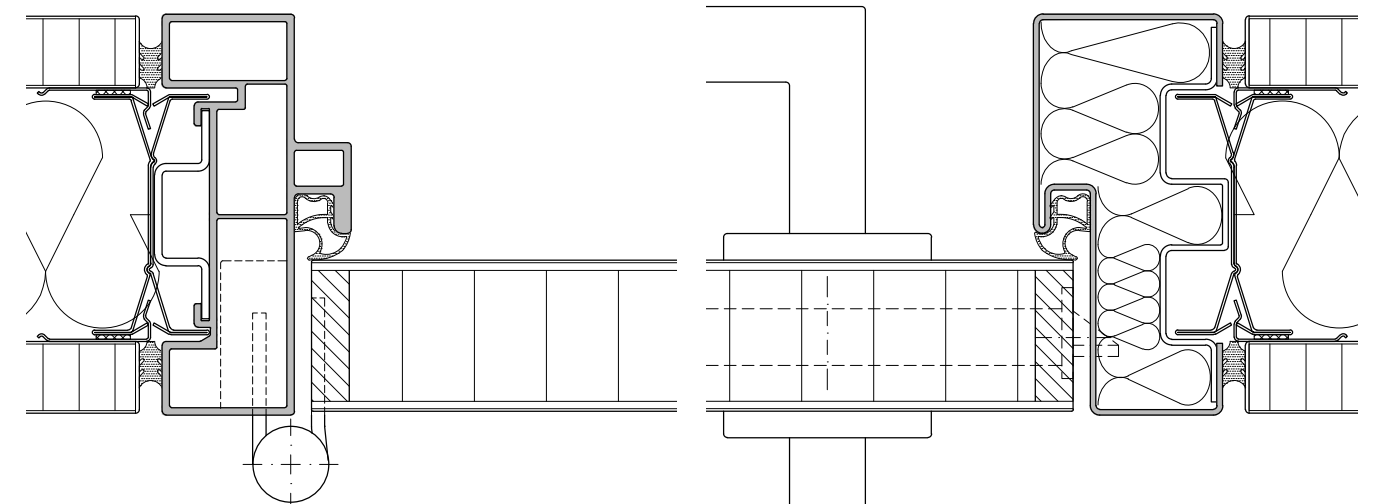
**Door fittings:** For wooden door elements see page 32

**Sound insulation:** (also see pages 38-39)  
Sound-insulation test values H70 with single-rebate door frame  $R_{w,p} = 37/40$  dB  
Sound-insulation test value H70 with double-rebate frame  $R_{w,p} = 42$  dB



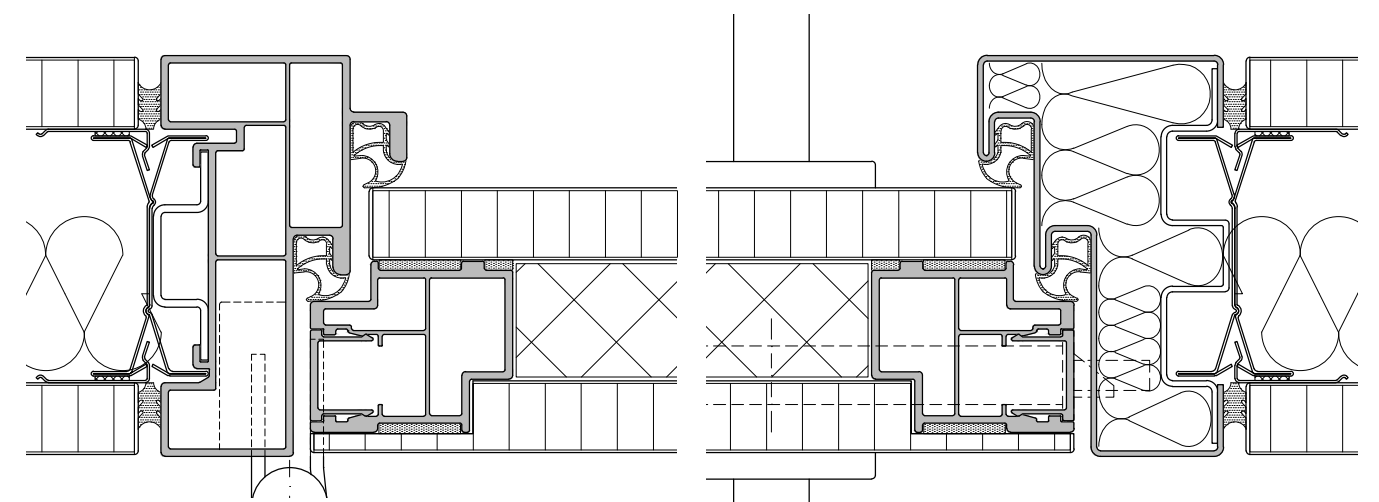
Wooden door element H40 with alum. frame 35/50T70

... next to fecoplan glazing



Wooden door element H40 with alum. frame 35/35

... with steel frame 35/50



Wooden door element H70 with alum. frame 35/50/15

... with steel frame 35/65

The basic system details for feco door elements, such as hinge pockets and rebate depth, are almost always identical and enable a range of different door frames and door leaves to be combined.

The system sections show only a selection of the possible combinations. On page 39 you can find an overview of the possible door variants with sound insulation values.



### Wooden door element H70

**Door frame:** Alum. frame 35/50T70, alum. frame 35/35, steel frame 35/50, alum. frame 18/50, alum. frame 18/0 with corridor-side concealed door-frame recess, double-rebate alum. frame 35/50/15 or double-rebate steel frame 35/65 - see door frame description on page 32

**Door leaf:** Aluminium framed wooden door leaf, door leaf thickness 70 mm, covered with 2 x 19 mm wooden panels, door-leaf frame consists of aluminum profiles, system groove on the face side for flush-mounting all fittings, sound insulation insert, flush closing with jamb rebate, depending on door frame on hinge side, opposite to hinge side (corridor-side) or on both sides flush to door frame/covering/glazing

**Surface:** On both sides melamine resin direct-coating according to DIN EN 14 322, optional HPL laminate to DIN EN 438 or real wood veneers, frame in aluminium anodized E6/EV1, optionally powder-coated in popular RAL colours

**Door fittings:** For wooden door elements see page 32

**Sound insulation:** (also see pages 38-39)  
 Sound-insulation test values H70 with single-rebate door frame  $R_{w,P} = 37/40$  dB  
 Sound-insulation test value H70 with double-rebate frame  $R_{w,P} = 42$  dB

### Wooden door element H85

**Door frame:** Alum. frame 18/50 or alum. frame 18/0 with corridor-side concealed door-frame recess Alum. frame 18/50 or alum. frame 18/0 with corridor-side concealed door-frame recess - see door frame description on page 32

**Door leaf:** Aluminium framed wooden door leaf, door leaf thickness 85 mm, covered with 2 x 19 mm wooden panels, door-leaf frame consists of aluminum profiles, system groove on the face side for flush-mounting all fittings, sound insulation insert, rebated on the hinge side with jamb rebate, opposite to hinge side (corridor-side) flush to door frame/covering/glazing

**Surface:** See wooden door element H70

**Door fittings:** For wooden door elements see page 32

**Sound insulation:** (also see pages 38-39)  
 Sound-insulation test value H85  $R_{w,P} = 42$  dB

### Wooden door element H105

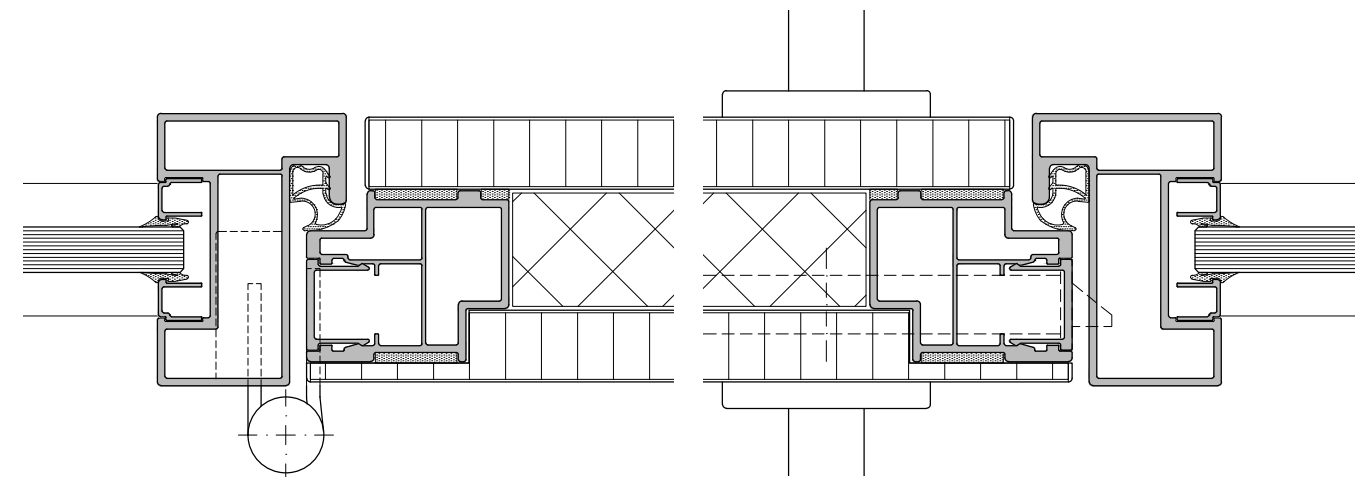
**Door frame:** Alum. frame 35/65 or alum. frame 35/0 with corridor-side concealed door-frame recess - see door frame description on page 32

**Door leaf:** Aluminum-frame wooden door leaf, door leaf thickness 105 mm, covered with 2 x 19 mm wooden panels, door-leaf frame consists of aluminum profiles, system groove on the face side for flush-mounting all fittings, sound insulation insert, flush closing with double jamb rebate, on both sides flush to door frame/covering/glazing

**Surface:** See wooden door element H70

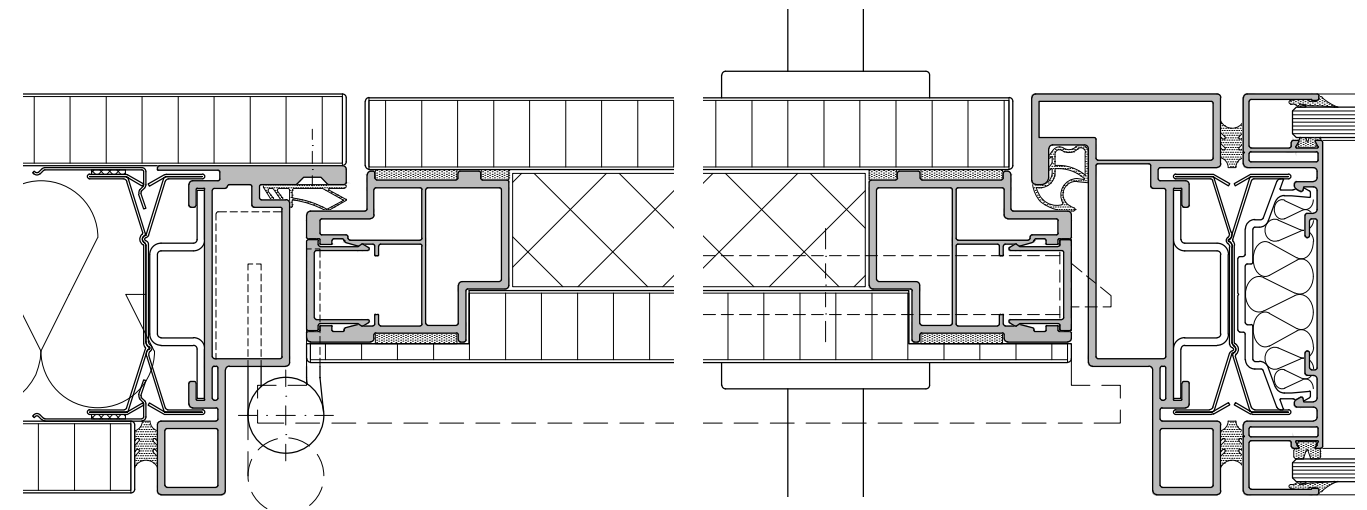
**Door fittings:** For wooden door elements see page 32

**Sound insulation:** (also see pages 38-39)  
 Sound-insulation test values H105  $R_{w,P} = 37/42$  dB



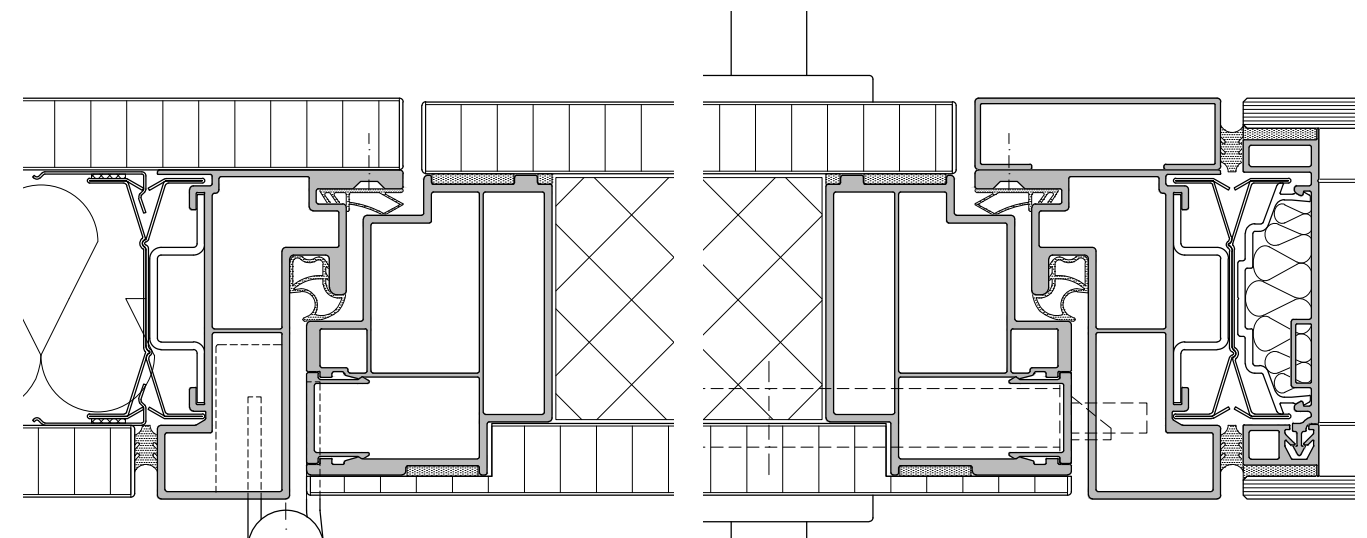
Wooden door element H70 with alum. frame 35/50T70

... next to fecoplan glazing



Wooden door element H70 (H85) with alum. frame 18/0

... with alum. frame 18/50 next to fecofix glazing



Wooden door element H105 with alum. frame 35/0

... with alum. frame 35/65 next to fecostruct glazing

## Door frames

**Aluminium frame 35/35:** Aluminium door frame width 35/35 mm (hinge side/opposite hinge side) for hinge-side flush door leaf 40-70 mm thick, made of extruded aluminium profiles, mitred corners connected with 3D clamping angles, surface aluminium natural E6/EV1 anodized, optionally powder-coated in popular RAL colours 3-D adjustable hinge pockets, door sealing with welded mitre corners

**Aluminium frame 35/50/70:** Aluminium door frame width 35/50 mm and frame depth 70 mm for all-glass construction fecoplan, with laterally integrated glass fixture for 40-70 mm thick door leaf on hinge side/flush on both sides, otherwise identical to aluminium frame 35/35

**Aluminium frame 35/50/15:** Double-rebate aluminium door frame width 35/50 mm and 15 mm rebate for hinge-side flush door leaf 70 mm thick, design identical to aluminium frame 35/35, additional second rebate and door sealing

**Steel frame 35/50:** Steel door frame with width 35/50 mm for hinge-side flush door leaf 40-70 mm thick, made of galvanized steel profiles, mitred corners welded and polished, surface powder-coated in popular RAL colours, height-adjustable channel brackets, 3D adjustable hinge pockets, door sealing with welded mitred corners

**Steel frame 35/65:** Double-rebate steel door frame width 35/65 mm for hinge-side flush door leaf 70 mm thick, same design as steel frame 35/50, additional second rebate and door sealing

**Aluminium frame 18/50:** Aluminium door frame width 18/50 mm for opposite hinge-side (corridor-side) flush door leaf 70-85 mm thick, made of extruded aluminium profiles, mitred corners connected with 3D clamping angles, surface aluminium natural E6/EV1 anodized, optionally powder-coated in popular RAL colours, 3D adjustable hinge pockets, door sealing with welded mitre corners (note: door stop necessary)

**Aluminium frame 18/0:** Aluminium door frame width 18/0 mm for opposite hinge-side (corridor-side) flush door leaf 70-85 mm thick, with opposite hinge-side concealed door-frame recess, otherwise identical to aluminium frame 18/50

**Aluminium frame 35/0-65:** Double-rebate aluminium door frame width 35/0 or 35/65 mm for two-sided flush door leaf 105 mm thick, optionally with concealed (0) or front-flush frame (65), design identical to aluminium frame 35/35, additional second rebate and door sealing

## Door fittings

**Door fittings - wooden doors:** Triple-roll hinges, 3D adjustable, height 120 mm, surface in stainless steel, brushed matt

Hinges for wooden door unit H70-H105, please see framed doors

Mortise lock, class 4 according to DIN 18 251, with whisper trap, stainless steel forend, designed for profile cylinder (PC)

Handle set round or mitre-shape with round escutcheons, swivel-mounted, class 3 according to DIN EN 1906, surface aluminium F1 or stainless steel, brushed matt, with PC escutcheon, optional standard handle sets

Automatic drop seal from  $R_{w,P} = 32$  dB (SSK 1)

**Door fittings - glass doors:** Glass door triple-roll hinges with angular hinge straps, 3D adjustable, height 120 mm, surface aluminium colour or stainless steel, brushed matt

Glass door lock, class 3 according to DIN 18 251, with whisper trap, angular lock case, prepared for profile cylinder (PC), anodized EV1 aluminium surface, optional stainless steel, brushed matt

Handle set round or mitre-shape with round escutcheons, swivel-mounted, class 3 according to DIN EN 1906, surface aluminium F1 or stainless steel, brushed matt, without PC escutcheon, optional standard handle sets

Automatic floor seal from  $R_{w,P} = 32$  dB (SSK 1), surface aluminium EV1 anodized, optimally powder-coated

**Door fittings - framed doors:** Triple-roll hinges with angular hinge straps, 3D adjustable, height 120 mm, surface in stainless steel, brushed matt, flush mounted on front side

Tubular-frame mortise lock, class 3 according to DIN 18 251, with whisper trap (not for S105), stainless steel forend, designed for profile cylinder (PC)

Offset tubular-frame handle set, round or mitre-shape with oval escutcheons, class 3 according to DIN EN 1906, surface aluminium F1 or stainless steel, brushed matt, with PC oval escutcheon, optional standard handle sets

Automatic floor seal from  $R_{w,P} = 32$  dB (SSK 1)

**Door fittings - sliding doors:** Aluminium sliding-door fittings, roller carriage with double roller, surface aluminium natural E6/EV1 anodized, optional powder coated in popular RAL colours, with end stopper and bottom guide

Glass-sliding-door unit ST10B with 2 stainless steel bottom-rolls  $D = 85$  mm and  $20 \times 6$  mm bottom-rail in stainless steel, brushed matt, top channel aluminium profile  $W \times H = 35 \times 50$  mm with integrated end stopper, surface aluminium natural E6/EV1 anodized, optional powder coated in popular RAL colours

Push bar diameter 30 mm, height 1,200 mm, optional 1,800 mm, surface in stainless steel, brushed matt